



PROSPECTUS

www.thebeechhouseschool.co.uk





Our School

The Beech House school's ethos is in line with The Beech House; to provide a therapeutic approach to education, ensuring our young people reach their full potential. We provide a broad range of opportunities and experiences to help guide them into a positive future.

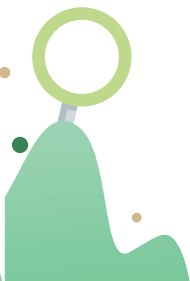
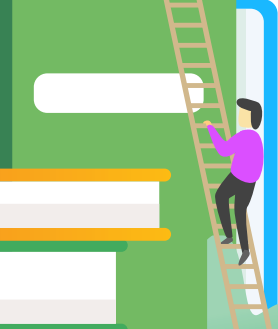
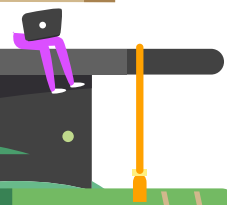
Through working with attachment theory and building self-confidence, we are able to create a safe and contained space for our young people to learn. We have knowledge of neuroscience and how this can be applied to learning and education.

About

The Beech House School aims to assist the development of young people with SEMH needs. The school has been set up to support young people who have experienced adversity in their lives and are looked after children. They will generally have a Statements of SEN or an Education, Health and Care Plans. Admission is coordinated between the school, the residential home they reside in, the Virtual School and the Social Work team.

To support our young people, we maximize opportunities to develop: a sense of belonging, esteem, communication skills, listening skills, emotional literacy, resilience, social and emotional aspects of learning, self-awareness, self-organisation and independence, opportunities for taking responsibility, opportunities to take on a role outside of current expertise. We make opportunities for experiences and tasks that are challenging but achievable. We create opportunities for adults to model and facilitate positive interactions that enable young persons to develop positive ideas about themselves and others.

We take a 'positive unconditional regard' approach. 'Positive unconditional regard' separates what a person has done in the past from the inherent value they possess. We have a high level of differentiation in behaviour management practice, so it is student specific and focuses on logical consequences as part of a stepped approach to behaviour management. We encourage a young person to freely express ideas and feelings, such as joy, sadness, frustration and fear, enabling a young person to develop strategies to cope with new, challenging or stressful situations. We involve a young person in identifying issues and finding solutions whilst encouraging them to think about issues from the viewpoint of others. We relate to the young person at their emotional/ social age rather than the chronological age.





Our Curriculum

At The Beech House School, we make sure we have a comprehensive understanding of the needs of each young person when developing our short- and long-term learning plans. As experienced professionals working with young people with individual needs, we understand that a sense of belonging, and connection forms the basis for healthy personal and educational development.

Each young person is offered a broad and balanced curriculum with a strong emphasis on the foundational skills of English, Mathematics, Science and ICT; with a focus on PSHE and building emotional resilience.

We work with young people at key stage 3 and 4, we follow the National Curriculum, weaving core skills into a diverse range of topics and themes. Due to our small size, we are able to adapt our teaching and learning to suit the needs of the young person.

We place a strong emphasis on preparing our young people for the world of further education, work and independent living and can ensure that where gaps exist in any area, we are able to structure the learning to fill them.

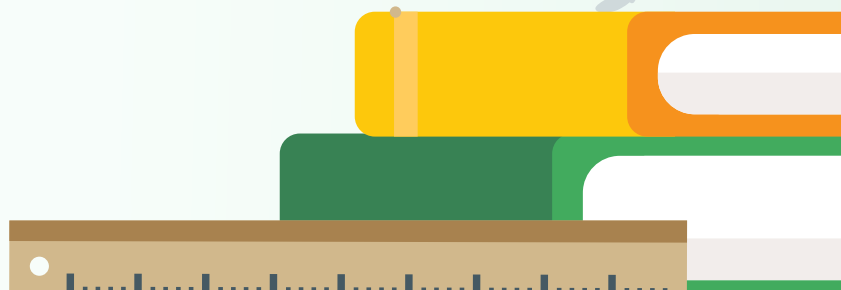
The Beech House school will support students up to GCSE level and ensure they are prepared for the world of work or college. We will work with a young person to plan for their future and the qualifications they need to achieve their goals and aspirations after school. We have links with local colleges and provide opportunities for students to access and experience things outside of the school. We listen to our students and help them to make the right choices for their future.

Emotional Literacy

At The Beech House School, we recognise that emotional wellbeing is at the core of good learning and that students need to know that they are loved and cared for if they are to make the most of their resources and personal capacity. We place a strong emphasis on building strong, trusting and warm bonds with all our young people, and work with them to ensure that school feels like 'a good place to be'. Personal success and difficulties faced are discussed on a regular basis, both as a vehicle for learning and a way of celebrating small victories on daily basis.

Extra- Curricular

Our students can access a wide range of activities, including cooking and learning new musical instruments. We try to provide opportunities for all our Young People to take up interests beyond the classroom and encourage them to do so whenever possible, bringing in outside staff if needed. We go on regular trips to local places of religious and/or cultural interest and make use of our proximity to London to visit galleries, museums, and exhibitions. Our trips are very much entwined into our curriculum, and this makes the whole topic much more exciting and real to learn.



Facilities

The Beech House School is a small school. We have 2 classrooms, an office which can double up as a 1:1 learning room, a kitchen, a large garden and an outbuilding which can be used outside school for Art, Music and creative activities. We make regular use of our ICT to engage our young people and enhance learning. Staff often bring pets to the home and school; the love of animals is actively encouraged. We recognise the benefits that caring for animals can bring and the therapeutic benefits of pets being present.

Vision statement

Our vision is to foster a love for learning, to nurture and grow our student's self-worth, their knowledge and their skill sets so that they meet life as confident and warm, empathetic individuals.

- Inspire - a Love for Learning: through engaging curriculums and creative teachers, who with patience and good humour work to stimulate curiosity and inquisitiveness supporting the development of a love for learning.
- Respect - We provide a safe environment in which individuality is valued, diversity celebrated, and a strong sense of self-worth imparted.
- Nurture - We work with students to identify, explore and realise their potential, thereby empowering them to take ownership of their learning and behaviour.
- Warmth - Dedicated Teachers: Our school has enthusiastic, dedicated, and empathetic staff who have oodles of patience and a passion for teaching. They provide a safe environment in which students learn and have fun.
- Resilience - We are a therapeutic organisation. School and Home are one team who work in unison towards the common goal of every child excelling and making progress. A strong relationship between both settings is central in providing an environment in which trusting relationships are cultivated.

THE
BEECH
HOUSE SCHOOL

Head Teacher - Camilla McInnes
Assistant Headteacher - Zara Bakhsh
Governors details Available upon request

Ofsted Registration number - 936/6012 Enquiries - info@thebeechhouseschool.co.uk

The Beech House School is directly linked to The Beech House and wholly owned by Cameron & Cooper Limited.